

# bridlington poetry festival

at Sewerby Hall  
10 - 12  
June 2011

*Poet Laureate*  
**Carol Ann Duffy**

**Julia Copus**

**Douglas Dunn**

**Ian McMillan**

**Sean O'Brien**

**Bernard O'Donoghue**

**Christopher Reid**

**Carol Rumens**

**Penelope Shuttle**

**and many more...**

and some  
**AMAZING**  
events  
for kids!

Booking Line 01482 392699  
[www.bridlington-poetry-festival.com](http://www.bridlington-poetry-festival.com)



**EAST RIDING**  
OF YORKSHIRE COUNCIL

# Welcome



John Wedgwood Clarke  
Festival Director

Poetry is language speaking body unto body. Its resonances are for the head and heart. That's why poetry festivals matter: they celebrate poetry's many

voices and allow them to escape the page and make their claim on us with all their various pleasures on offer.

We're delighted that so many fine poets, writers, editors, literary organisations and publishers have chosen to be part of this young and rapidly growing festival. There are workshops, readings, panel discussions, events for children, and the Poet Laureate Carol Ann Duffy.

We hope you'll join us in the stunning surroundings of Sewerby Hall to hear the sweet and the raucous, the exuberant and the elegiac, as poetry lifts up its voice in praise of all our lives in language.

**John Wedgwood Clarke**  
*Festival Director*

**Booking Line 01482 392699**  
**[www.bridlington-poetry-festival.com](http://www.bridlington-poetry-festival.com)**  
All tickets include free entry to Sewerby Hall and Gardens

*Bridlington Poetry Festival is part of the East Riding Library Service's literature development work delivered through the organisation Wordquake. Wordquake receives regular funding from Arts Council England and ERYC.*

The festival offers special thanks to Arc Publications, Magma, the Poetry Translation Centre and The Poetry Business for their generous contributions to this year's programme, and Strategy Plus, for sponsoring and building our website.

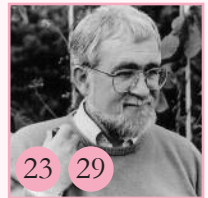
# Festival Highlights



Carol Ann Duffy



Julia Copus



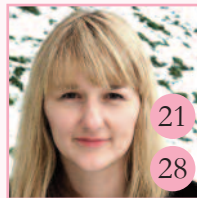
Douglas Dunn



Ian McMillan



Sean O'Brien



Clare Pollard



Christopher Reid



Penelope Shuttle



Matthew Hollis *on*  
Edward Thomas

| Friday 10 June    | Event  | No. |
|-------------------|--|-----|
| 10.30am - 1.00pm  | Workshop: Elizabeth Barrett, <i>Flying Words</i>   | 1   |
| 2.00pm - 4.30pm   | Workshop: Abi Curtis, <i>Transforming Raw Material</i>   | 2   |
| 2.00pm - 4.30pm   | Workshop: Gaia Holmes, <i>Colouring the Senses</i>   | 3   |
| 5.00pm - 6.00pm   | Reading: Elizabeth Barrett, Abi Curtis & Gaia Holmes   | 4   |
| 6.15pm - 7.00pm   | Festival Launch  | 5   |
| 7.00pm - 8.00pm   | Reading: Christopher Reid  | 6   |
| 8.30pm - 9.30pm   | Reading: Ian McMillan & Andrew McMillan  | 7   |
| Saturday 11 June  |  |     |
| 10.00am - 12.00pm | Workshop for children: <i>Rusticus</i> (poetry / visual art)   | 8   |
| 10.00am - 1.00pm  | Workshop: Christopher Reid   | 9   |
| 10.00am - 1.00pm  | Workshop: Penelope Shuttle, <i>Exploring the Atlas</i>   | 10  |
| 10.30am - 11.15am | Reading: <i>Wingbeats</i>  | 11  |
| 10.30am - 11.30am | Reading: <i>Old City New Rumours</i>   | 12  |
| 12.00pm - 12.45pm | Reading: <i>Wingbeats - voice, cry, call</i>   | 13  |
| 12.00pm - 1.15pm  | Performance: Carol Ann Duffy with John Sampson<br><i>The Princess' Blankets</i>                              | 14  |
| 1.00pm - 1.45pm   | Open Mic   | 15  |
| 2.00pm - 4.00pm   | Workshop for children: <i>Rusticus</i> (poetry / visual art)   | 16  |
| 2.30pm - 3.30pm   | Reading: Bernard O'Donoghue & Mohan Rana   | 17  |
| 4.00pm - 5.15pm   | Reading: Peter Didsbury & Ed Reiss   | 18  |
| 6.00pm - 7.15pm   | Reading: Penelope Shuttle & Susan Wicks  | 19  |
| 8.00pm - 9.15pm   | Reading: Carol Ann Duffy with John Sampson   | 20  |
| Sunday 12 June    |  |     |
| 10.00am - 12.00pm | Workshop: Clare Pollard ( <i>Magma</i> ), <i>Getting Published in Magazines</i>                              | 21  |
| 10.00am - 12.00pm | Workshop: Susan Wicks, <i>Poetry from Clutter</i>  | 22  |
| 11.00am - 11.45am | Larkin & East Riding Open Poetry Competition:<br>adjudication with Douglas Dunn & prize winners              | 23  |
| 12.00pm - 1.00pm  | In Conversation: <i>Now All Roads Lead to France – The Last Years of Edward Thomas</i> , with Matthew Hollis | 24  |
| 1.15pm - 2.00pm   | In Conversation: <i>The Poetry Business</i> at 25 & <i>Magma</i> at 50                                       | 25  |
| 2.00pm - 4.00pm   | Workshop for children: <i>Rusticus</i> (poetry / visual art)   | 26  |
| 2.15pm - 3.15pm   | Reading: Michael Haslam & Peter Riley  | 27  |
| 3.30pm - 4.30pm   | Reading: Julia Copus & Clare Pollard ( <i>Magma</i> )  | 28  |
| 5.00pm - 6.15pm   | Reading: Douglas Dunn & Sean O'Brien   | 29  |

1



Elizabeth Barrett

**Elizabeth Barrett**  
**Writing Workshop**  
*Flying Words*  
**RSPB Bempton Cliffs**  
 10.30am - 1.00pm, £10

Set your words flying with a workshop and come along and see 200,000 seabirds at RSPB Bempton Cliffs, the only mainland seabird colony in England. Elizabeth Barrett's poetry is tuned-in to making resonant metaphors out of the natural world. *A Dart of Green and Blue* (Arc, 2010) is Elizabeth's fourth poetry collection.

2



Abi Curtis

**Abi Curtis**  
**Writing Workshop**  
*Transforming Raw Material*  
**Swinton Room**  
 2.00pm - 4.30pm, £10

Explore not only how to transform the material in your notebook into crafted poetry, but how to engage with sources of research. Whether you are interested in your own experiences, scientific ideas, historical events or works of art, you'll be introduced to a range of techniques to turn these into the stuff of poetry.

Abi Curtis' *Unexpected Weather* was a winner of Salt Publishing's Crashaw Prize in 2008 and shortlisted for the London Festival Fringe Poetry Award 2010. She received an Eric Gregory Award in 2004 and was first published as part of the Tall-Lighthouses Pilot series. She is a Lecturer in Creative Writing at York St John University.

3



Gaia Holmes

**Gaia Holmes**  
**Writing Workshop**  
*Colouring the Senses*  
**Boardroom**  
 2.00pm - 4.30pm, £10

Sensory details can bring a poem to life. This practical, inspirational workshop will focus on using these details in your writing, providing an opportunity to read and make poems that focus on the rich and vibrant language of the senses.

Gaia Holmes is a freelance writer who works in schools, community centres and libraries in the West Yorkshire region. Gaia's first poetry collection, *Dr James Graham's Celestial bed*, was published in 2006. Her second, *Occasional China*, will be published by Comma Press in June, 2011.

4

**Abi Curtis, Gaia Holmes  
 & Elizabeth Barrett**

**Poetry Reading**  
**Swinton Room, 5.00pm - 6.00pm**  
 £2 (free to workshop participants)

Join our three inspiring workshop leaders to hear how they practise what they teach!

5

**Festival Launch**  
**with music from Richard Adams**  
**Swinton Room & Orangery**

6.15pm, free

Get into the festival spirit with a glass of wine, good conversation and songs from Richard Adams, including new work commissioned for the festival.

6



Christopher Reid  
© Jemimah Kuhfeld

**Christopher Reid**  
**Poetry Reading**  
**Orangery**

7.00pm - 8.00pm, £6

Christopher Reid's deeply moving and beautifully made collection *A Scattering* (2009) went on to win the Costa Book of the Year Award, ahead of some of the finest writers around working in all literary genres. His narrative, picaresque poem *The Song of Lunch* (also 2009) was made into a TV film starring Alan Rickman – an extraordinary journey for a poem to undertake! Find out why Christopher Reid's poetry has travelled so far and touched the lives of so many.

7



Ian McMillan  
© Des Willie

**Ian McMillan**  
**& Andrew McMillan**  
**Poetry Reading**  
**Orangery**

8.30pm - 9.30pm, £6



Andrew McMillan

The voice of Yorkshire and a force for good in poetry, Ian is one of the funniest and most skilful poets around, blurring the boundary between great stand-up comedy

and startlingly good poetry – a man fit-to-burst with memorable speech. He's joined by his son, Andrew, finding his own way in the wide world of words with impressive ability. Andrew has been writer-in-residence for the Watershed Landscape Project, poet-in-residence for Off the Page and apprentice poet-in-residence for the Ilkley Literature Festival. His debut pamphlet, *every salt advance*, was published by Red Squirrel Press in 2009.

**Combined evening ticket £10**

saturday

8



Sewerby Hall © East Riding  
County Council

**Rusticus**  
**Children's Poetry/Visual Art Workshop**  
**Sewerby Hall Gardens**

10.00am - 12.00pm, £2

(7yrs+ accompanied by a paying adult)

Join a range of colourful and engaging characters on a romp around the grounds at Sewerby and take delight in discovering forgotten corners and secret hideaways.

Prepare to be tantalised by words blowing in the breeze, ancient story-telling from the trees themselves and whatever we can make, build, draw and shout along our way.

Will our creations be enough for us to gain entrance to the elusive forest glade?

9

**Christopher Reid:**  
**Writing Workshop**  
**Goodin Room, 10.00am - 1.00pm, £15**

This is an extraordinary opportunity to work with not only one of our finest writers, but also a deeply influential editor. From 1991 to 1999 Christopher Reid was Poetry Editor at Faber & Faber, and worked with Ted Hughes on such books as *Tales from Ovid* and *Birthday Letters*.

10



Penelope Shuttle  
© Jemimah Kuhfeld

**Penelope Shuttle  
Writing Workshop  
Exploring the Atlas  
Boardroom**

10.00am - 1.00pm, £15

At no time in history has it been cheaper or easier to travel. But this workshop will focus on journeys both real and imaginary.

You'll be looking at poems of travel by poets such as Elizabeth Bishop and Pablo Neruda, and focussing on the tension between such poets and the stay-at-home poet (such as Philip Larkin).

You'll be writing about modes of travel, taking your imaginary suitcase off the top of the wardrobe, and preparing to experience the new, the challenging and the amazing.

11



Puffin  
© Markus Horsch

**Wingbeats  
Poetry Reading by  
participating schools  
Swinton Room**

10.30am - 11.15am  
free (booking essential)

*This is our Serengeti* – poetry inspired by the landscape and birds of RSPB Bempton Cliffs written by pupils from Bempton and Flamborough Primary Schools and introduced by Pat Borthwick.

*Wingbeats* is part of imove, a celebration of human movement through a series of new arts projects in the run-up to London 2012. *Wingbeats* is the East Riding's contribution to the Cultural Olympiad.

12



Carol Rumens

**Old City New Rumours  
Poetry Reading  
Carol Rumens,  
David Wheatley,  
Cliff Forshaw &  
Maurice Rutherford  
Orangery**

10.30am - 11.30am, £5

*Old City New Rumours* is sequel to the influential 1982 anthology *A Rumoured City*, edited by Douglas Dunn and with a foreword by Philip Larkin. Nearly thirty years later, and in conjunction with Larkin25 celebrations, Five Leaves Publishing gives us the opportunity to discover the continuing literary riches of the city of Hull.

13



Pat Borthwick

**Wingbeats:  
voice, cry, call  
Poetry Reading  
Pat Borthwick &  
Adam Strickson  
Swinton Room**

12.00pm - 12.45pm, £2



Adam Strickson

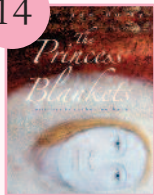
Pat Borthwick and Adam Strickson read recent poems inspired by Bempton Cliffs and lyrics from *Flight Paths*, the *Wingbeats* music-theatre performance.



*Look out for The Flying Day  
on Saturday 23 July, 2-5pm,  
Sewerby Hall and Gardens,  
and 9-11pm, Bridlington Spa Gardens.*

[www.bridlington-poetry-festival.com](http://www.bridlington-poetry-festival.com)  
Booking Line 01482 392699

14



The Princess' Blankets  
Templar (2009)

**Carol Ann Duffy  
with John Sampson**  
**Performance**

*The Princess' Blankets*  
**Orangery**  
12.00pm - 1.15pm, £5  
(7yrs+ accompanied by  
a paying adult)

The Poet Laureate performs her long children's poem, an enchanting, thought-provoking tale with a strong environmental theme, with music from John Sampson.

15



© Antony Dunn

**Open Mic**  
**Swinton Room**  
1.00pm - 1.45pm, £2

Add your contribution to the feast of words – you never know who might be listening!

16

**Rusticus: Children's  
Poetry/Visual Art Workshop**  
**Sewerby Hall Gardens**  
2.00pm - 4.00pm, £2 (see p5 for details)  
(7yrs+ accompanied by a paying adult)

17



Bernard O'Donoghue  
© James Connolly

**Bernard O'Donoghue  
& Mohan Rana**  
**Poetry Reading**  
**Orangery**  
2.30pm - 3.30pm, £6



Mohan Rana

Winner of the Whitbread Prize for Poetry, Bernard O'Donoghue's poems have long captivated readers with their lyricism, their grace, and with what John Burnside calls their 'scrupulous

honesty'. His *Selected Poems* (Faber 2008) draws on his four earlier collections of poetry, *The Weakness* (1991), *Gunpowder* (1995), *Here Nor There* (1999) and *Outliving* (2003). His poetry is mesmeric, often recalling the rural Cork of his upbringing as seen against the exile of his adulthood, ever alive to the desire but impossibility of return. His new collection, *Farmers Cross*, is published this year by Faber.

Mohan Rana was born in Delhi in 1964. He has published six poetry collections in Hindi and some of his poems were included in *Modern Poetry in Translation* special issue, 'Mother Tongues'. A bilingual collection, *With Eyes Closed*, was published in 2008. His work has also been translated by Bernard O'Donoghue.

*In association with The Poetry Translation Centre*

18



Peter Didsbury

**Peter Didsbury  
& Ed Reiss**  
**Poetry Reading**  
**Orangery**  
4.00pm - 5.15pm, £6



Ed Reiss

Peter Didsbury is one of the most distinctive and flagrantly imaginative poets at work today and a long-time supporter of creative writing activities in the East Riding of Yorkshire. Ed Reiss's

pamphlet *Now Then* was published by Smith / Doorstop in 2007 and was a First stage winner of The Poetry Business Book & Pamphlet Competition. His new pamphlet, *Your Sort* was published in April, also by Smith / Doorstop.

**Afternoon ticket (2.30pm - 5.15pm) £10**

19



Penelope Shuttle  
© Jemimah Kahfeld

**Penelope Shuttle  
& Susan Wicks**  
**Poetry Reading**  
**Orangery**  
6.00pm - 7.15pm, £6

Penelope Shuttle's ninth collection, *Sandgrain and Hourglass*, was a Poetry Book of the Year in *The Financial Times* and a Poetry Book Society Recommendation – 'a moving and abundant book' (*Guardian*). Her previous collection *Redgrove's Wife* was short-listed for the Forward Prize and the T S Eliot Award.

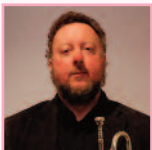
She reads with Susan Wicks, whose new collection, *House of Tongues*, is concerned with acceptance and refusal, power and the lack of it, silence and the refusal of silence. 'A fine poet, with an eye for detail and a gift for conveying the earthiness of everyday experience' – Jo Shapcott.

20



Carol Ann Duffy

**Carol Ann Duffy  
with John Sampson**  
**Poetry Reading**  
**Orangery**  
8.00pm - 9.15pm, £10



John Sampson  
© Marius Alexander

An evening with Britain's first female Poet Laureate and musician John Sampson. Duffy reads from some of her latest as yet unpublished work and from her many collections of poems,

including *Rapture*, *Mean Time*, *Selling Manhattan* and *The World's Wife* – poems which 'vibrate with intense colloquialisms, physicality, energy, freshness and cheek'.

Combined evening ticket £14

sunday

21



Clare Pollard

**Clare Pollard**  
**The Magma Workshop**  
**Getting Published**  
**in Magazines**  
**Boardroom**  
10.00am - 12.00pm, £10

Drawing on her experience as an editor for *Magma*, Clare Pollard will advise on getting published in magazines: from writing poems that leap out from the slush-pile to great covering letters.

With exercises, examples and discussion, this is a workshop about two of the main qualities editors look for: originality and professionalism.

*In association with Magma: 'the poetry magazine with a different editor each issue.'*

22



Susan Wicks

**Susan Wicks:**  
**Poetry Workshop**  
**Poetry from Clutter**  
**Goodin Room**  
10.00am - 12.00pm, £10

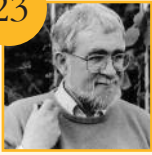
This workshop will look at the poetic possibilities of mixing things together – language and 'materials' – and finding unlikely poems in the mess of our everyday lives.

The writing exercises will be suitable for both experienced and novice poets.

[www.bridlington-poetry-festival.com](http://www.bridlington-poetry-festival.com)  
Booking Line 01482 392699



23



Douglas Dunn  
© Fay Godwin

**Larkin & East Riding  
Open: Competition  
Adjudication  
Douglas Dunn  
& the prize winners  
Orangery  
11.00am - 11.45am, free**

And first prize in one of the UK's top poetry competitions goes to...? Find out what new talent our poetry competition has discovered and hear what one of our foremost poets, Douglas Dunn, has to say about it.



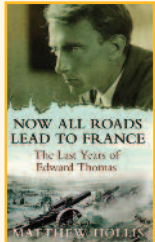
*In association with the Philip Larkin Society, co-funders of the £2,000 total prize money.*

24



Matthew Hollis  
© Claire McNamee

**Matthew Hollis  
in conversation  
with Antony Dunn  
Edward Thomas:  
Now All Roads Lead  
to France  
Orangery  
12.00pm - 1.00pm, £5**



*Now All Roads Lead to France*  
(Faber 2011)

Edward Thomas was perhaps the most beguiling and influential of First World War poets. Matthew Hollis' new book, *Now All Roads Lead to France*, is an account of

Thomas' final five years and centred on his extraordinary friendship with Robert Frost and fatal decision to fight in the war.

Matthew Hollis is the author of acclaimed poetry collection *Ground Water*.

**www.bridlington-poetry-festival.com  
Booking Line 01482 392699**

25

**A joint anniversary:  
The Poetry Business at 25  
& Magma at 50**

**Panel Discussion  
Orangery  
1.15pm - 2.00pm, £2**

The poetry business celebrates its 25th year this year and *Magma* has just published its 50th edition. The editors of these prestigious outlets for poetry discuss the day to day life of their organisations and the shape of poetry in the UK today. A great chance to find out about how to connect up with poetry fresh from the pens and printers of some of the best poets around, and essential for all those interested in joining the poetry conversation with their own words.

*In association with Magma and The Poetry Business.*

26

**Rusticus: Children's  
Poetry/Visual Art Workshop**

**Sewerby Hall Gardens  
2.00pm - 4.00pm, £2  
(7yrs+) See p5 for details**

27



Michael Haslam

**Michael Haslam  
& Peter Riley  
Poetry Reading  
Orangery  
2.15pm - 3.15pm, £6**



Peter Riley

The relationship between poetry and place, language and landscape lies at the heart of both Peter Riley's and Michael Haslam's work. It's not an easy relationship but one that leads to poetry of

extraordinary inventiveness, philosophical responsibility and auditory pleasure. Not to be missed by anyone looking for new ways to approach writing poetry.

Writing in *The Guardian* Paul Bachelor described Michael Haslam's latest collection *A Cure for Woodness* (Arc) as 'compelling, densely musical work emerges from a joyous cauldron of babble, the place where folksong comes from, or even further back: its combination of emotional directness and compact, ornate language is reminiscent of the medieval *Pearl* poem, or of Old English verse.'

Peter Riley's new book *The Glacial Stairway* collects almost a decade's new poems and sequences. 'His poetry is urgently challenging and immensely valuable.' David Kennedy, *PN Review*.

28



Julia Copus  
© Fabienne Brochier



Clare Pollard

**Julia Copus  
& Clare Pollard**  
**Magma Poetry**  
**Reading**  
**Orangery**  
3.30pm - 4.30pm, £6

Julia Copus's publications include *The Shuttered Eye* (1995) which was shortlisted for the Forward Prize for Best First Collection, and *In*

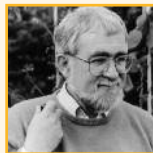
*Defence of Adultery* (2003) – both Poetry Book Society Recommendations. She has won numerous awards for her poetry. In 2002, she won First Prize in the National Poetry Competition with 'Breaking the Rule'. Her radio work includes an afternoon play, *Eenie Meenie Macka Racka* (2003) which was winner of the BBC's prestigious Alfred Bradley Award.

Clare Pollard has published four collections of poetry, the most recent of which is *Changeling*. Her play *The Weather* premiered at the Royal Court Theatre and her documentary for radio, *My Male Muse*, was a Radio 4 Pick of the year. She recently co-edited the Bloodaxe anthology *Voice Recognition: 21 poets for the 21st Century* and is on the board of *Magma* poetry magazine.

29



Sean O'Brien  
© Moira Conway



Douglas Dunn  
© Fay Godwin

**Sean O'Brien  
& Douglas Dunn**  
**Poetry Reading**  
**Orangery**  
5.00pm - 6.15pm, £7

A wonderful double-bill, with strong local links, brings the festival to an elegiac and celebratory close – not to be missed. Sean O'Brien will be reading from *November*,

his first collection since his widely celebrated *The Drowned Book* – the only book of poetry to have won both the Forward and TS Eliot prizes.

He'll be reading alongside Douglas Dunn, whose ten collections of poetry include *Elegies* (Whitbread Book of the Year, 1985), *The Year's Afternoon* and *The Donkey's Ears*. His *New Selected Poems* was published by Faber in 2003.

**Combined day ticket**  
**(excluding workshops) £20**

**www.bridlington-poetry-festival.com**  
**Booking Line 01482 392699**



## Sewerby Hall

Church Lane, Sewerby, Bridlington, YO15 1EA

The Grade I listed **Sewerby Hall** is 2 miles north of Bridlington, on the East Yorkshire coast, set in 50 acres of landscaped gardens in a cliff top location with magnificent views over Bridlington bay.

**Sewerby Zoo**, in the grounds of the Hall, is an essential part of your Festival visit. Meet a whole variety of domestic and wild animals from across the world including – the big favourite – a colony of Humboldt Penguins.

*“I spent many holidays in Bridlington, most of them walking between the town and Sewerby along the cliffs, looking enviously at those who went past on the model train. I liked the zoo; a hyacinth macaw would come and sit on your shoulder, and a llama once spat at my dad.”* Simon Armitage

## Getting to Sewerby

A regular **train service** runs to Bridlington from both Scarborough and Hull.

During late afternoons and evenings, a **Festival mini-bus service** will run between Sewerby Hall and Bridlington. A timetable will be available on booking and, from mid-April, on the festival website.

The **Bridlington Land Train** links Sewerby Hall with the North and South Promenades of the town’s seafront – surely the most picturesque way to reach the Festival.

## Access

The Gardens, Tea Rooms, Zoo, Hall and Museum are all accessible for people using wheelchairs. There is a unisex disabled toilet inside the Hall and in the Courtyard next to the Clock Tower Tea Rooms.

© East Riding County Council



© Mylces Bacon

# bridlington poetry festival

at Sewerby Hall  
10 - 12  
June 2011

## Booking information

Tickets available on-line: [www.bridlington-poetry-festival.com](http://www.bridlington-poetry-festival.com)

Over the phone: Mon - Fri, 9.00am - 4.45pm, 01482 392699

**All tickets include entry price to Sewerby Hall and Gardens**

By post: Bridlington Poetry Festival, Libraries and Information, Council Offices, Skirlaugh, HU11 5HN. (Make cheques payable to ERYC and enclose your name, address, telephone number, and include the name of the events you'd like to attend and the number of tickets you need.)

John Wedgwood Clarke: Director

Antony Dunn: Assistant Director

Thanks to:

Carrie Judge: Volunteers Co-ordinator

James Thompson: Festival Technician

Ian Harker: Blackwells, Leeds

the team at Sewerby Hall

and all the poets, publishers and volunteers

who have made this weekend possible

Website sponsored by



STRATEGY  
PLUS



EAST RIDING  
OF YORKSHIRE COUNCIL



Supported by  
ARTS COUNCIL  
ENGLAND



magma  
POETRY

poetry  
translation  
centre



a million  
voices for  
nature